

# Toxicity Assessment of *Lactococcus lactis* IO-1 Used in Coconut Beverages against *Artemia salina* using Brine Shrimp Lethality Test

Olaide Olawunmi Ajibola<sup>1\*</sup>, Samuel Lihan<sup>2</sup>, Ahmad Sallehin Hussaini<sup>1</sup>, Rosmawati Saat<sup>1</sup>, Idris Adewale Ahmed<sup>3</sup>, Wahab Abideen<sup>4</sup>, Fazia Mohammad Sinang<sup>1</sup>, Ngieng Ngui<sup>1</sup>, Gbadebo Clement Adeyinka<sup>5</sup>

1- Faculty of Resource Science & Technology, Universiti Malaysia Sarawak, Kota Samarahan, 94300

2- Institute of Biodiversity and Environmental Conservation, Universiti Malaysia Sarawak, Kota Samarahan, 94300

3- Center for Natural Products Research and Drug Discovery, University of Malaysia, 50603, Kuala Lumpur

4- Faculty of Basic and Applied Science, Osun State University, Osogbo, Nigeria. Department of Microbiology

5- Department of Chemical Engineering, Mangosuthu University of Technology, 51, Umlazi, Durban, South Africa

## Abstract

**Background and objective:** Plant-based fermented foods containing favorable microorganisms have been used to improve diets. Starter microorganisms may produce toxic compounds that are hazardous to consumers. Brine shrimp lethality test is a convenient and appropriate assay to check toxicity of samples. The aim of this study was to investigate toxicity of pasteurized coconut beverages at 70°C, 80°C and 90°C for 25, 15 and 5 min, respectively, and unpasteurized coconut beverages fermented by *Lactococcus lactis* against *Artemia salina* nauplii.

**Material and methods:** After extraction of coconut beverages fermented by *Lactococcus lactis* using methanol, cytotoxicity was assessed using (lethality concentration). Newly 10 hatched *Artemia salina* nauplii were transferred into various concentrations (in replicates) of the fermented sample extracts. After 24 h, survived *Artemia salina* nauplii were counted and lethality concentration was assessed. The brine shrimp lethality test was used to investigate sample toxicity at various doses from 1 to 500 µg ml<sup>-1</sup> at various time intervals.

**Results and conclusion:** The fermented extracts included low larvicidal potential against *Artemia salina* nauplii. Correlations were reported between the extract doses and percentage mortality of nauplii brine shrimp. The pasteurized fermented extracts were less toxic and cheaper. Interestingly, starter culture, fermentation, thermal treatment and time contributed to breaking down of hydrolysable tannins and larger polyphenolic compounds, producing smaller compounds with lower toxicity responses in brine shrimp lethality test. The four probiotics beverage extracts included non-cytotoxic activity as presented by low mortalities in brine shrimp lethality test. In conclusion, these extracts can be used to justify probiotic production of beverages.

**Conflict of interest:** The authors declare no conflict of interest.

## How to cite this article

Ajibola OO, Lihan S, Hussaini AS, Saat R, Ahmed IA, Abideen W. Toxicity Assessment of *Lactococcus lactis* IO-1 Used in Coconut Beverages against *Artemia salina* using Brine Shrimp Lethality Test. *Appl Food Biotechnol* 2020; 7(3): 127-134. <http://dx.doi.org/10.22037/afb.v7i3.29346>

## Article Information

### Article history:

Received 09 March 2020  
Revised 12 April 2020  
Accepted 20 April 2020

### Keywords:

- *Artemia salina*
- Brine shrimp lethality test
- Coconut beverage
- *Lactococcus*

### \*Corresponding author:

Olaide Olawunmi Ajibola,  
Faculty of Resource Science &  
Technology, Universiti  
Malaysia Sarawak, Kota  
Samarahan, 94300

Tel: +60166513450

Fax: +6082583160

E-mail:  
16020010@siswa.unimas.my

## 1. Introduction

Coconut (*Cocos nucifera* Linn.) is one of the perennial plants cultivated for their pharmacological benefits. It belongs to family of Arecaceae [1,2]. Scientific reports have revealed that coconut beverages include a wide range of pharmacological effects e.g. antithrombotic, anti-bacterial, antioxidant, immunostimulatory, hypolipidemic, cardioprotective, antidiabetic and antiviral effects [3,4]. Fermented

coconut beverages are famous in Asian countries, especially South-East Asian countries. People in these regions commonly believe that consumption of traditionally prepared fermented plant beverages includes potentials to cure most illnesses [5].

Fermented foods are rich in bioactive microorganisms, which offer health benefits to their consumers and enhance

the overall food quality [6]. Production of the plant-based fermented foods using specific microbial cultures such as lactic acid bacteria (LAB) (*Lactobacillus*, *Bifidobacterium*) and yeast strains (*Saccharomyces*) for the enhancement of food nutritional and pharmaceutical values has widely been reported [7]. *Lactococcus* (*L.*) *lactis* subsp. *lactis* IO-1 has successfully been used as a starting culture to develop lactic acid from lactose and hydrolysis of citric acid and casein by fermentative pathways [8].

The strain is regarded as generally recognized as safe by scientists because of its probiotic properties, including production of bacteriocins [8]. Special properties of the strain from other LABs include its ability to ferment xylose to produce L-lactic acid [8]. Bioactive compounds from fermented crop beverages can be good alternative beverage supplements in regular medications to control metabolic disorders [9]. However, consumer safety includes great concerns since control of specific microorganisms is difficult and contamination may result in intoxication by pathogenic microorganisms [10].

Although coconut beverages are used in traditional medicines to treat several diseases, the current knowledge on fermented coconut beverages is rather scarce, especially fermentation with probiotic bacteria such as *Lactobacillus* and *Bifidobacterium* [10]. However, scientific evidence is necessary to prove that lactic acid fermentation systems can enhance medicinal and pharmacological activities of coconut beverages using probiotic *L. lactis*. However, probiotic coconut beverages are consumed as functional beverages in human medicine and nutrition [11].

These effects have not been proven scientifically. This can be due to production of micronutrients, vitamins, amino acids and glucuronic acid during lactic acid fermentation. Mixed cultures of yeasts and LAB have been used to produce inexpensive probiotic coconut beverages [12]. However, some of these probiotic bacteria can produce toxins during metabolic processes, which can decrease their uses and create hazards for the consumers. Various assays have been developed to investigate potential toxicity of these bacteria on species of *Thamnocephalus platyurus*, *Artemia* (*A.*) *urmiensis*, *A. salina* and *A. franciscana*. The brine shrimp lethality test (BSLT) was investigated as a suitable probe for the preliminary assessment of toxicity [13].

Over the last decade, toxicity screening of wider varieties of food and plant products have been carried out using BSLT as a method of choice by many researchers [13]. Of various *Artemia* species, *A. salina* is the most commonly studied species, appearing in more than 90% of all studies on *Artemia* species [14]. As an alternative bioassay for the toxicity investigation of plant extracts [13], BSLT is widely used in toxicity assessment of cyanobacteria, dental materials, metal ions, heavy metals, algae, nanoparticles as

well as screening of food products [14]. The procedure is simple, affordable, non-aseptic and high potential for bioactive chemicals [14]. Furthermore, this popular *In vivo* assay has shown a successful assay for bioassay-guide fractionation of active cytotoxins [14]. More importantly, good correlations have been reported for the lethal concentrations that kill 50% of the exposed population lethality concentration (LC<sub>50</sub>) [14]. In this study, toxicity of various coconut beverages fermented by *L. lactis* were assessed against *A. salina*. This study was carried out based on the mortality of *A. salina* brine shrimps at six different concentrations (1, 10, 50, 100, 250, and 500 µg ml<sup>-1</sup>) of fermented coconut beverage (UPW= unpasteurized coconut beverages, pasteurized coconut beverages= PCW90, PCW80 and PCW70) extracts at 0, 24 and 48 h.

Several researchers previously focused on beneficial effects of probiotic bacteria on the general health of humans and animals, including improvement of immune system and enhanced protection against intestinal pathogens [5-8]. However, the bacterial safety is less reported. Therefore, the present study assessed toxicity of the selected coconut beverages fermented by *L. lactis*.

## 2. Materials and Methods

### 2.1 Sample preparation

Fresh crops of *Cocos nucifera* Linn were harvested in Kota Samarahan, Sarawak, Malaysian Borneo. The coconut crops were transferred to the laboratory for assessment with no microbial or physical damages. The *Cocos nucifera* Linn juices were prepared by perforating crops using stainless steel knife after main epicarps were cleaned with sterile water.

### 2.2 Laboratory Preparation of Coconut juice

The *Cocos nucifera* Linn juice was prefiltered through 0.8-µm polysulfone filters (TISH Scientific, USA) before being filtered through 0.65-µm filter papers (TISH Scientific, USA). The filtrate was dispensed into sterile transparent containers sealed for UPW. Then, UPW was transferred into disinfected sealed bottles for pasteurization. Bottles were immersed in water bath at temperatures of 90, 80 and 70°C for 5, 15 and 25 min (PCW90, PCW80 and PCW70) respectively, prior to storage at 4°C until further analyses. In this study, thermal processing of the coconut water was carried out at various temperatures and times to recreate the processing scenario that coconut juice products undergo after fermentation.

### 2.3 Cell collection and cultivation environment

The *L. lactis* IO-1 strain was previously isolated by Chinachoti et al. [15] and its *In vitro* potential probiotic properties were reported by Carvajal-Zarrabal et al. [16]. The probiotic IO-1 (provided by the Biochemistry Labor-

atory, Universiti Malaysia Sarawak) was sub-cultured thrice to achieve an active cell culture for the propagation of inoculums by inoculating the strain into artificial broth media (containing 20 g of glucose and 5 g of yeast extract per L) and incubating them at 37°C for 18 h. To prepare starting cultures, cells were harvested by centrifugation at 7500× g for 12 min and washed once with 0.85% sodium chloride. Then, cultures were diluted with sterile CW to achieve an optical density of  $OD_{575} = 0.401$  using UV-1601 Spectrophotometer [Shimadzu, Kyoto, Japan] of approx.  $10^8$  CFU ml<sup>-1</sup> using standard plate count method.

## 2.4 Sample Preparation

The four media (400 ml) were inoculated using 0.4% (v v<sup>-1</sup>) pure *L. lactis* IO-1 ( $10^8$  CFU ml<sup>-1</sup>). Batch processing was carried out statically at 30°C for 2 days using conical flasks (500 ml). Flasks were then agitated at 120 rpm with no pH adjustments. Fermented samples were collected at 24-h intervals.

## 2.5 Fermented sample extraction procedure

In this study, method of Mahayothee et al. [17] was adopted with mild modifications. Briefly, extraction was carried out using methanol as solvent with a ratio of 1:5 v v<sup>-1</sup> of fermented sample to methanol. Sample was agitated at 120 rpm for 6 h at 25°C using orbital shaker (New Brunswick Scientific, Edison, New Jersey, USA). Sample was filtered through Whatman no. 4 papers. The fermented filter sample extract was heated at 40°C using rotary evaporator (R-114, Buchi, Switzerland). For toxicity analysis, a concentrated extract of 10 mg was volumetrically adjusted using 10 ml of dimethyl sulfoxide.

## 2.6 Toxicity testing against brine shrimps

### 2.6.1 Hatching brine shrimp cysts

Hatching of the brine shrimp cysts (Figure 1a) was carried out with little modifications using method of Omeke et al. [14]. Active nauplii (Figure 1b) were prepared after hatching with plastic pipettes.

### 2.7 Brine shrimp bioassay

The lethality bioassay of the extracted fermented samples was carried out using BSLT based on a method by Omeke et al. [14]. Each well was filled with ten freshly hatched *A. salina* nauplii. The positive control group included combinations of 5 mg of thymol in 5.0 ml of sterile water with ten nauplii. The negative control group included 0.5 ml of dimethyl sulfoxide and 4.50 ml of sterile water with ten

nauplii. Each experiment was carried out in triplicate. Plates were incubated at 25°C for 24 h under direct light. Every 6 h, mortality rate of the nauplii was investigated using light microscope. During the study, no feed or air was needed since feed of brine shrimps with dry yeast suspension during the toxicity assessment was considered insignificant [18]. Populations of dead and survived nauplii were counted in each well and LC<sub>50</sub> was calculated. Based on Thangapandi Veni calculations [19], toxicity characteristics of the extracts were estimated as follows [20]:

$$\text{Mortality (\%)} = \frac{D_{\text{test}} - D_{\text{control}}}{A_{\text{control}}} \times 100 \quad (\text{Equation 1})$$

Where, D test was the population of dead larvae in each test plate, A control was the population of live larvae in control plates, and D control was the population of dead larvae in each control plate.

## 2.8 Statistical analysis

Data were analyzed using SPSS Software v.21.0 (IBM Analytics, USA) to calculate LC<sub>50</sub> values of the *A. salina* nauplii for each extract concentration (P<0.05) [21]. All calculations were carried out in triplicate.

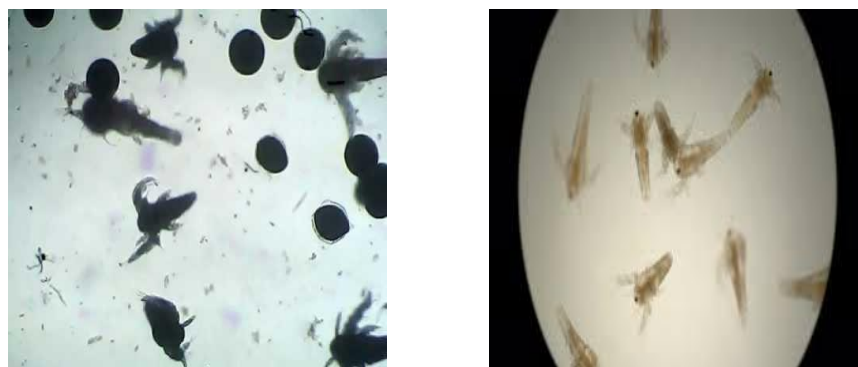
## 3. Results and Discussion

Fermented crude extracts (UPW, PCW90, PCW80 and PCW70) samples at 24-h intervals showed various results for the mortality of brine shrimps (Table 1). For each 24-h interval sample, the four fermented extracts were tested at six concentrations (1, 10, 50, 100, 250, and 500 µg ml<sup>-1</sup>). The LC<sub>50</sub> was recorded at the highlighted intervals using BSLT (Table 1). Results showed that concentrations at 500 µg ml<sup>-1</sup> killed shrimps. *Artemia* species was shown to help various toxicity assessments to identify bioactive compound in crude plant extracts [14]. The BSLT is one of the reliable routine assessments. This assay is appropriate to screen certain food additives, heavy metals, plant extracts, pesticide and pharmaceutical components for toxicity [14]. The BSLT has been popular due to its easy use, high sensitivity and low cost [14].

Natural deaths, which occurred in blank seawater and wells with negative and positive controls, usually did not exceed 24%. This was possibly due to the lack of oxygen because most of the shrimps did not survive 48 h after the assay [18].

Factors such as salinity temperature and composition of the media and larvae maturation affect the natural death. This study showed the maximum and the minimum lethal concentrations as 500 and 1 µg ml<sup>-1</sup>, respectively. Direct correlations were demonstrated between the number of mortalities and the fermented samples. Order of the extract toxicity was as follows:

UPW > PCW90 > PCW80 > PCW70



**Figure 1.** Microscopic observations of a) hatching *Artemia salina* cysts and b) nauplii of *Artemia salina*

**Table 1.** Average death rate of *Artemia salina* nauplii at various concentrations of coconut beverages containing *Lactococcus lactis* (mean  $\pm$ SD,  $n = 3$ )

Extract sample	Time (h)	Concentration ( $\mu\text{g ml}^{-1}$ )						LC <sub>50</sub> ( $\mu\text{g ml}^{-1}$ )
		1	10	25	50	100	500	
UPW	0	0.33 $\pm$ 0.58	1.00 $\pm$ 1.73	1.33 $\pm$ 0.58	1.67 $\pm$ 1.15	2.33 $\pm$ 1.53	3.00 $\pm$ 0.00	4800.49
	24	0.00 $\pm$ 0.00	0.67 $\pm$ 0.58	1.00 $\pm$ 0.00	1.30 $\pm$ 1.15	2.33 $\pm$ 0.58	2.33 $\pm$ 0.58	6567.46
	48	0.00 $\pm$ 0.00	7.33 $\pm$ 0.47	1.33 $\pm$ 1.10	1.67 $\pm$ 1.15	2.33 $\pm$ 0.58	2.33 $\pm$ 0.58	7158.15
PCW90	0	0.33 $\pm$ 0.58	0.67 $\pm$ 1.15	1.33 $\pm$ 1.53	2.00 $\pm$ 1.00	2.33 $\pm$ 0.58	2.67 $\pm$ 1.15	5712.20
	24	0.30 $\pm$ 0.58	0.67 $\pm$ 0.58	0.33 $\pm$ 0.58	1.33 $\pm$ 1.15	2.00 $\pm$ 1.00	2.33 $\pm$ 2.08	6879.87
	48	0.00 $\pm$ 0.00	0.33 $\pm$ 0.58	0.67 $\pm$ 1.15	1.33 $\pm$ 1.52	1.33 $\pm$ 0.58	2.00 $\pm$ 1.00	8070.42
PCW80	0	0.00 $\pm$ 0.58	0.33 $\pm$ 1.53	1.00 $\pm$ 1.53	1.00 $\pm$ 1.00	1.33 $\pm$ 0.58	2.33 $\pm$ 1.15	5680.04
	24	0.33 $\pm$ 0.58	0.67 $\pm$ 0.58	0.33 $\pm$ 0.58	1.33 $\pm$ 1.15	1.67 $\pm$ 1.00	2.33 $\pm$ 2.08	7297.50
	48	0.00 $\pm$ 0.00	0.33 $\pm$ 0.58	0.67 $\pm$ 1.15	0.67 $\pm$ 0.58	1.33 $\pm$ 1.15	2.00 $\pm$ 1.00	8272.28
PCW70	0	0.00 $\pm$ 0.00	0.67 $\pm$ 0.58	1.00 $\pm$ 1.73	1.33 $\pm$ 0.58	1.67 $\pm$ 1.15	2.33 $\pm$ 0.58	6531.00
	24	0.00 $\pm$ 0.58	0.33 $\pm$ 0.58	0.67 $\pm$ 1.15	1.33 $\pm$ 1.52	1.33 $\pm$ 0.58	2.00 $\pm$ 1.00	8070.42
	48	0.00 $\pm$ 0.00	0.33 $\pm$ 0.58	1.00 $\pm$ 0.00	1.00 $\pm$ 1.00	1.33 $\pm$ 0.58	2.33 $\pm$ 0.58	9261.30
+C		5.00 $\pm$ 0.82	7.33 $\pm$ 0.47	10.0 $\pm$ 0.00	10.0 $\pm$ 0.00	10.0 $\pm$ 0.00	10.0 $\pm$ 0.00	10.58
-C	0	0	0	0	0	0	0	0

+C, positive control; -C, negative control

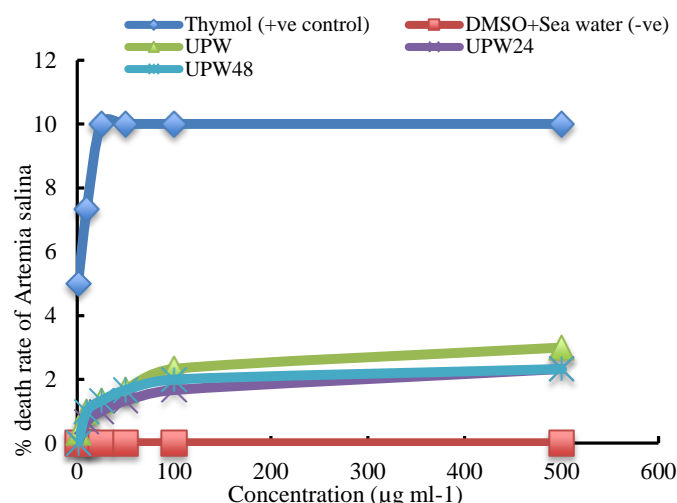
PCW= pasteurized coconut beverages, UPW= unpasteurized coconut beverages

Fermented coconut beverage extracts showed various mortality results for each sample as presented in Figures 2-5. Based on the results from this study, all fermented samples showed the least effect on mortality. Some lactic acid strains have been shown to produce antioxidant, GABA and essential amino acids, vitamin B12 as well as elements and minerals [12]. Furthermore, LAB are useful in improving animal health [22], preserving nutritional quality [23], preventing gastrointestinal infection [24], improving production in animals [25], improving digestibility of crude proteins [26], decreasing deleterious effects of mycotoxins [27] and enhancing bee health [28]. Results of this study are similar to those of Quiao-Won et al. [13], who reported kombucha fermentation cytotoxicity from various substrates. When comparing BSLT (LC<sub>50</sub>) values of the fermented samples at 24-h intervals during the lactic acid fermentation, BSLT (LC<sub>50</sub>) values of PCW70 were significantly the lowest ( $P < 0.05$ ), followed by those of PCW80, PCW90 and UPW. It was suggested that severity of the thermal treatment (pasteurization) in PCW90, PCW80 and PCW70 samples before lactic acid fermentation

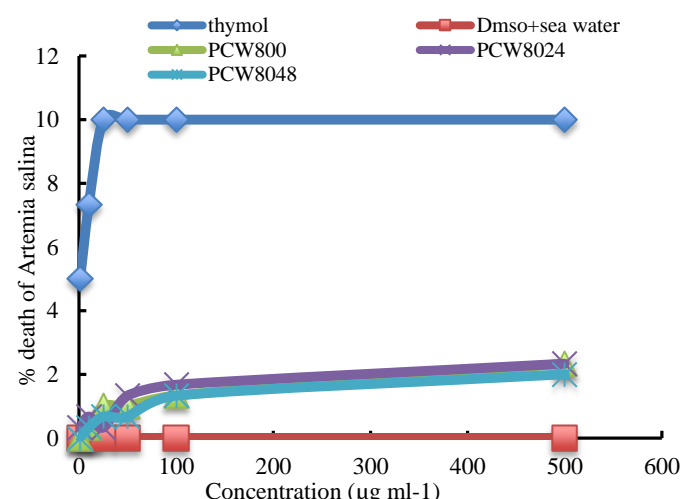
contributed to decreases in cytotoxicity through the oxidation and subsequent polymerization and degradation of the toxic hydrolysable compounds [29]. Moreover, heat treatment (pasteurization) duration of the three samples (UPW, PCW90, PCW80 and PCW70) before fermentation contributed to decreases in toxicity values, contrary to metabolic processing, processing duration and pasteurization [30]. Therefore, this decreased toxicity is one of the important technical characteristics used to select LAB starters. Furthermore, LC<sub>50</sub> of these four extracts were 1-500  $\mu\text{g ml}^{-1}$ . Thus, they showed low cytotoxicity and mortality (Table 1).

The lowest effect was from fermented PCW70 followed by PCW80 and PCW90. It can be suggested that fermented PCW70, PCW80 and PCW90 were more appropriate for the brine shrimps, compared to that the fermented UPW was. This could be due to the absorption and metabolism of the phenolic compounds, affected by 1) degrees of glycosylation/acetylation, 2) fundamental structure, 3) conjugation with other phenolics, 4) molecular sizes, 5) degrees of polymerization, and 6) solubility [31].

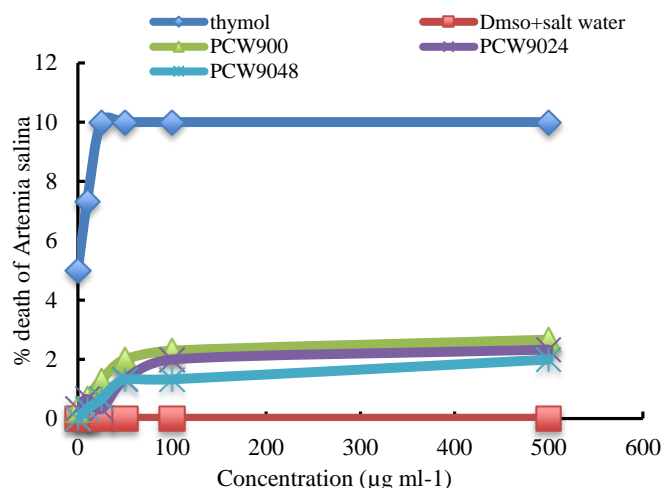




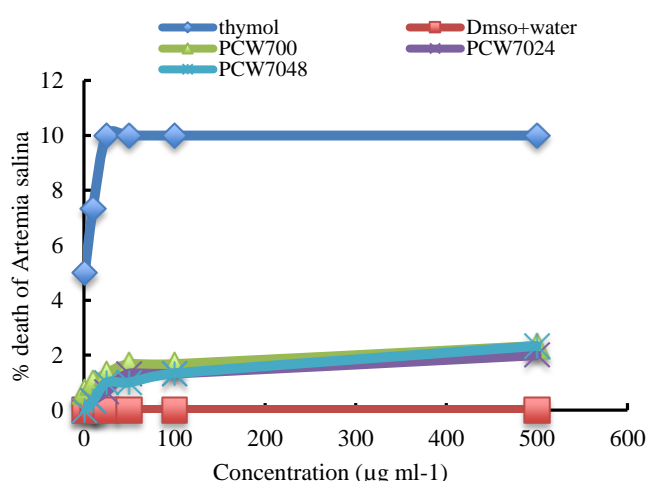
**Figure 2.** The mortality proportion of *Artemia salina*, 24 h after exposure to various concentrations of the fermented UPW extract at 0, 24 and 48 h



**Figure 4.** Mortality rate (%) of the brine shrimps, 24 h after exposure to various concentrations of the fermented PCW80 extract at 0, 24 and 48 h  
pasteurized coconut beverages= PCW



**Figure 3.** Death rate (%) of the brine shrimps, 24 h after exposure to various concentrations of the fermented PCW90 extract at 0, 24 and 48 h  
pasteurized coconut beverages= PCW



**Figure 5.** Mortality rate (%) of the brine shrimps, 24 h after exposure to various concentrations of the fermented PCW70 extract at 0, 24 and 48 h  
pasteurized coconut beverages= PCW

Therefore, presence of tannin, coumarins, triterpenoids, flavonoids and another toxic elements were verified. Heating during the pasteurization distinguished toxic elements from these matrices and broke down larger hydrolyzable polyphenolics compounds, producing smaller compounds that displayed decreased toxicity before fermentation [32]. Furthermore, coconut water might contain phenolic compounds in stable forms of glycosides, which could be deglycosylated into aglycones by heat and hence increased their non-cytotoxicity. However, further investigations are necessary to support these suggestions. Based on the  $LC_{50}$  values ( $P < 0.05$ ), all fermented extracts showed a significantly lower mortality, compared to positive control (Table 1).

Cytotoxicities of the beverage extracts at  $LC_{50}$  were compared to the toxicity index of Meyer or Clarkson

[33,34]. Extracts with  $LC_{50}$  less than  $1000 \mu\text{g ml}^{-1}$  were toxic, while extracts with  $LC_{50}$  higher than  $1000 \mu\text{g ml}^{-1}$  were referred to as non-toxic [33,34]. In addition, sample extracts were classified in the following order according to Clarkson's toxicity requirements: extracts with  $LC_{50}$  exceeding  $1000 \mu\text{g ml}^{-1}$  were classified as non-toxic,  $LC_{50}$  exceeding  $500\text{--}1000 \mu\text{g ml}^{-1}$  as low cytotoxicity,  $LC_{50}$  exceeding  $100\text{--}500 \mu\text{g ml}^{-1}$  as medium toxic and  $LC_{50}$  exceeding  $0\text{--}100 \mu\text{g ml}^{-1}$  as extreme toxic [32]. Moreover, the reported high mortality in fermented UPW ( $> 1000 \mu\text{g ml}^{-1}$ ) might not include significant toxicity concerns to wider uses in dietary supplements and foods. Nevertheless, thermal processing is necessary to decrease toxic bioactive compounds. Therefore, development of non-thermal processes that lead to better antioxidant and color retention may be beneficial, compared to the three samples [35]. This

significant lethality of *L. lactis* in the four coconut beverage extracts on brine shrimps can be used to establish an extremely low existence of potent cytotoxic compounds [19].

## 4. Conclusion

It can be concluded that all four probiotics beverage extracts used in this study include non-cytotoxic activities, as shown by low mortality rates in BSLT. These extracts can be used to justify the wide acceptability of *L. lactis* for the probiotic production of beverages, which are safe for consumption with no further health risks to humans.

## 5. Acknowledgements

This research was funded by a grant (grant no. FO7/SpGS/1554/2017).

## 6. Conflict of Interest

The authors declare no conflicts of interests.

### Authors' contributions

Ajibola Olaide Olawunmi and Gbadebo C Adeyinka carried out the laboratory experiments, drafted and also revised the manuscript; Samuel Lihan, Awang Ahamd Sallehin Awang Husaini and Rosmawati Saat helped designing the experiment and analyzing test data. Idris Adewale Ahmed, Fazia Mohammad, Wahab Abideen Akinkunmi and Ngieng Nguai Sing suggested the research focus and were involved in revising the manuscript.

## References

1. Arya Venugopal RK, Joseph D. *Cocos Nucifera*: It's pharmacological activities. *World J Pharm Sci.* 2017; 5(8): 195-200.
2. Prades A, Dornier M, Diop N, Pain JP. Coconut water uses, composition and properties: A review. *Fruit.* 2012; 67(2): 87-107. doi: 10.1051/fruits/2012009
3. DebMandal M, Mandal S. Coconut (*Cocos nucifera* L.: *Arecaceae*): In health promotion and disease prevention. *Asian Pac J Trop med.* 2011; 4(3): 241-247. doi: 10.1016/S1995-7645(11)60078-3
4. Lima EBC, Sousa CNS, Macedo D, Vasconcelos SMM. *Cocos nucifera* (L.) (*Arecaceae*): A phytochemical and pharmacological review. *Braz J Med Biol Res.* 2015; 48(11): 953-964. doi: 10.1590/1414-431x20154773.
5. Chaayasut C, Sivamaruthi BS, Makhmureang N, Peerajan S, Kesika PA. A survey of consumer opinion about consumption and health benefits of fermented plant beverages in Thailand. *Food Sci Technol.* 2018; 38(2): 299-309. doi: 10.1590/1678-457x.04917.
6. Woraharn S, Lailerd N, Sivamaruthi BS, Wangcharoen W, Sirisattha S, Chaayasut C. Screening and kinetics of glutaminase and glutamate decarboxylase producing lactic acid bacteria from fermented Thai foods. *Food Sci Technol Campinas.* 2014; 34(4): 793-799. doi: 10.1590/1678-457X.6519.
7. Peerajan S, Chaayasut C, Sirilun S, Chaayasut K, Kesika P, Sivamaruthi BS. Enrichment of nutritional value of phyllanthusemblica fruit juice using the probiotic bacterium, *Lactobacillus paracasei* HII01 mediated fermentation. *Food Sci Technol.* 2016; 36(1): 116-123. doi: 10.22159/ajpcr2018.v11i6.25325.
8. Kato H, Shiwa Y, Oshima K, Machii M, Araya-Kojima T, Zendo T, Shimizu-Kadota M, Hattori M, Sonomoto K, Yoshikawa H. Complete genome sequence of *Lactococcus lactis* IO-1, a lactic acid bacterium that utilizes xylose and produces high levels of L-lactic acid. *J Bacteriol.* 2012; 194(8): 2102-2103. doi: 10.1128/JB.00074-12
9. Woraharn S, Lailerd N, Sivamaruthi BS, Wangcharoen W, Sirisattha S, Peerajan S, Chaayasut C. Evaluation of factors that influence the L-glutamic and  $\gamma$ -aminobutyric acid production during *Hericium erinaceus* fermentation by lactic acid bacteria. *Cyta J Food.* 2016; 14(1): 47-54. doi: 10.1080/19476337.2015.1042525
10. Seesuriyachan P, Kuntiya A, Hanmoungjai P, Techapun C. Exopolysaccharide production by *Lactobacillus confusus* TISTR 1498 using coconut water as an alternative carbon source: The effect of peptone, yeast extract and beef extract. *Songklanakarin J Sci Technol.* 2011; 33: 379-387.
11. Nishimura M, Yoshida SI, Haramoto M, Mizuno H, Fukuda T, Kagami-Katsuyama H, Tanaka A, Ohkawara T, Sato Y, Nishihira J. Effects of white rice containing enriched gamma-aminobutyric acid on blood pressure. *J Tradit Complement Med.* 2016; 6(1): 66-71. doi: 10.1016/j.jtcme.2014.11.022.
12. Pessione E, Pessione A, Lamberti C, Coisson DJ, Riedel K, Mazzoli R, Bonetta S, Eberl L, Giunta C. First evidence of a membrane-bound, tyramine and  $\beta$ -phenylethylamine producing, tyrosine decarboxylase in *Enterococcus faecalis*: A two-dimensional electrophoresis proteomic study. *Proteomics* 2009; 9(10): 2695-2710. doi:10.1002/pmic.200800780.
13. Quiao-Won ME, Teves FG. Characteristics of kombucha fermentation from different substrates and cytotoxicity of tea broth. *Sustain Food Prod.* 2018; 4: 11-19. doi:10.18052/www.scipress.com/SFP.4.11
14. Omeke JN, Anaga AO, Okoye JA. Brine shrimp lethality and acute toxicity tests of different hydro-methanol extracts of *Anacardium occidentale* using in vitro and In vivo models: A preliminary study. *Comp Clin Path.* 2018; 27: 1717-1721. doi: 10.1007/s00580-018-2798-y.
15. Chinachoti N, Matsusaki H, Sonomoto K, Ishizaki A, Nisin Z. production by *Lactococcus lactis* IO-1 using xylose as a carbon source. *Biosci. Biotechnol Biochem.* 1998; 62(5), 1022-1024. doi: 10.1271/bbb.62.1022.
16. Carvajal-Zarrabal O, Nolasco-Hipolito C, Bujang KB, Ishizaki A. Production of nisin Z using *Lactococcus lactis* IO-1 from hydrolyzed sago starch. *J Ind Microbiol Biotechnol.* 2009; 36 (3): 409-15. doi 10.1007/s10295-008-0511-x
17. Mahayothee B, Koomyart I, Khuwijitjaru P, Siriwongwilaichat P, Nagle M, Muller J. Phenolic compounds, antioxidant activity, and medium-chain fatty acids profiles of coconut

- water and meat at different maturity stages. *Int J Food Prop*. 2016; 19(9): 2041-2051. doi: 10.1080/10942912.2015.1099042.
18. Hamidi MR, Jovanova B, Panovska TK. Toxicological evaluation of the plant products using brine shrimp (*Artemia salina* L.) model. *Maced Pharm Bull*. 2014; 60(1): 9-18. doi: 10.33320/maced.pharm.bull.2014.60.01.002.
  19. Jafari S, Mobasher N, Ghasemi Y, Museli S, Bidad S, Mobasher MA. Evaluation and comparison of the toxicity of some Iranian native plants and microalgae, using brine shrimp test (BST). *Trends Pharmacol Sci*. 2016; 2(4): 285-290.
  20. Kuspradini H, Rosiarto AM, Putri AM, Kusuma IW. Antioxidant and toxicity properties of anthocyanin extracted from red flower of flour tropical shrubs. *Nus Biosci*. 2016; 8(2): 135-140. doi: 10.13057/nusbiosci/n080201.
  21. Zarei M, Mobasher MA, Morowvat MH, Mousavi P, Montazeri-Najafabady N, Hajighahramani N, Ghasemi Y. Effects of menthone and piperitone on growth, chlorophyll a and  $\beta$ -carotene production in *Dunaliella salina*. *J Appl Pharm Sci*. 2016; 6(9): 215-219. doi:10.7324/JAPS.2016.60932.
  22. Ramos OY, Basualdo M, Libonatti C, Vega MF. Current status and application of lactic acid bacteria in animal production systems with a focus on bacteria from honey bee colonies. *J Appl Microbiol*. 2019; 128(5): 1248-1260. doi: 10.1111/jam.14469.
  23. Oliveira AS, Weinberg ZG, Ogunade IM, Cervantes AAP, Arriola KG, Jiang K, Kim D, Li X. Meta-analysis of effects of inoculation with homofermentative and facultative heterofermentative lactic acid bacteria on silage fermentation, aerobic stability, and the performance of dairy cows. *J Dairy Sci*. 2017; 100: 4587-4603. doi: 10.3168/jds.2016-11815.
  24. Dowarah R, Verma AK, Agarwal N, Singh P, Singh BR. Selection and characterization of probiotic lactic acid bacteria and its impact on growth, nutrient digestibility, health and antioxidant status in weaned piglets. *Plos One* 2018; 13: 1-24. doi:10.1371/journal.pone.0192978.
  25. Babot JD, Arganaraz-Martinez E, Saavedra L, Apella MC, Perez Chaia A. Compatibility and safety of five lectin-binding putative probiotic strains for the development of a multi-strain protective culture for poultry. *Benef Microbes*. 2018; 9: 927-935. doi:10.3920/BM2017.0199.
  26. Vega MF, Dieguez SN, Riccio B, Aranguren S, Denzoin L, Soraci AL, Tapia MO, Ross R, Apas A, Gonzalez SN. Zearalenone adsorption capacity of lactic acid bacteria isolated from pigs. *Brazilian J Microbiol*. 2019; 48(4): 715-723. doi: 10.1016/j.bjm.2017.05.001
  27. Liu N, Wang J, Deng Q, Gu K, Wang J. Detoxification of aflatoxin B1 by lactic acid bacteria and hydrated sodium calcium aluminosilicate in broiler chickens. *Livestock Sci*. 2018; 208, 28-32. doi: 10.1016/j.livesci.2017.12.005.
  28. Al-Ghamdi A, Ali Khan K, Javed Ansari M, Almasaudi SB, Al-Kahtani S. Effect of gut bacterial isolates from *Apis mellifera jemenitica* on *Paenibacillus* larvae infected bee larvae. *Saudi J Biol Sci*. 2018; 25: 383-387. doi: 10.1016/j.sjbs.2017.07.07.005.
  29. Choi Y, Lee SM, Chun J, Lee HB, Lee J. Influence of heat treatment on the antioxidant activities and polyphenolic compounds of Shiitake (*Lentinus edodes*) mushroom. *Food chem*. 2006; 99(2): 381-387. doi:10.1016/j.foodchem.2005.08.004
  30. Rakic S, Petrovic S, Kukic J, Jadranin M, Tesevic V, Povrenovic S, Siler-Marinkovic D. Influence of thermal treatment on phenolic compounds and antioxidant properties of oak acorns from Serbia. *Food Chem*. 2007; 104(2): 830-834. doi: 10.1016/j.foodchem.2007.01.025.
  31. Bravo L. Polyphenols: Chemistry, dietary sources, metabolism, and nutritional significance. *Nutr Rev*. 1998; 56: 317-333. doi: 10.1111/j.1753-4887.1998.tb01670.x.
  32. Nicol MC, Anese M, Parpinel MT. Influence of processing on the antioxidant properties of fruit and vegetables. *Trends Food Sci Tech*. 1999; 10: 94-100. doi:10.1016/S0924-2244(99)00023-0
  33. Meyer BN, Ferrigni NR, Putnam JE, Jacobsen LB, Nichols DJ, McLaughlin JL. Brine shrimp: A convenient general bioassay for active plant constituents. *Plant Med*. 1982; 45(5): 31-34. doi:10.1055/s-2007-971236.
  34. Clarkson C, Maharaj VJ, Crouch NR, Grace OM, Pillay P, Matsabisa MG, Bhagwandin N, Smith PJ, Folb PI. In vitro antiplasmodial activity of medicinal plants native to or naturalised in South Africa. *J Ethnopharmacol*. 2004; 92(2-3): 177-191. doi: 10.1016/j.jep.2004.02.011
  35. Garza S, Ibarz A, Pagan J, Giner J. Non-enzymatic browning in peach puree during heating. *Food Res Int*. 1999; 32: 335-343. doi: 10.1016/S0963-9969(99)00094-0.

## ارزیابی سمیت لاکتوباسیلوس لاکتیس IO-1 استفاده شده در شیر نارگیل در مقابل آرتیمیا سالینا با آزمون مرگ و میر میگوی آب شور

اولاد اولومی آجیبولا<sup>۱\*</sup>، ساموئل لیهان<sup>۲</sup>، احمد صالحین حسینی<sup>۱</sup>، روسماواتی سات<sup>۱</sup>، ادیس آدوال احمد<sup>۳</sup>، وهاب عابدین<sup>۴</sup>، فاضیا  
محمد سیناگ<sup>۱</sup>، نجینگ نجی<sup>۱</sup>، گبادبو کلمنت آدینکا<sup>۵</sup>

۱- دانشکده علوم و تکنولوژی منابع، دانشگاه ساراواک مالزی، کوتا ساماراهام، ۹۴۳۰۰.

۲- انستیتو حفاظت از محیط زیست و تنوع زیستی، دانشگاه ساراواک مالزی، کوتا ساماراهام، ۹۴۳۰۰.

۳- مرکز تحقیقات فرآورده های طبیعی و کشف مواد مخدر، دانشگاه مالزی، ۵۰۶۰۳، کوالا لامپور.

۴- گروه میکروپ شناسی، دانشکده علوم پایه و کاربردی، دانشگاه ایالت اوسان، اوزوگبو، نایجریه.

۵- گروه مهندسی شیمی، دانشگاه فنی مانگوسوتو، ۵۱، اولمازی، دوربان، افریقای جنوبی.

### چکیده

**سابقه و هدف:** مواد غذایی تخمیری گیاهی حاوی ریزاندامگان های<sup>۱</sup> مطلوبند و برای بهبود رژیم غذایی مورد استفاده قرار گرفته اند. ریزاندامگان های آغازگر ممکن است ترکیباتی سمی تولید کنند که برای مصرف کننده مضر می باشند. آزمون مرگ و میر میگوی آب شور روشی مناسب و راحت برای بررسی سمیت برخی نمونه ها می باشد. هدف این مطالعه بررسی سمیت شیر نارگیل پاستوریزه شده در درجه حرارت های ۷۰، ۸۰ و ۹۰ درجه سلسیوس به ترتیب به مدت ۵، ۱۵ و ۲۰ دقیقه و شیر پاستوریزه نشده توسط لاکتوباسیلوس لاکتیس و آرتیمیا سالینا ناپولی تخمیر شدند. توسط لاکتوباسیلوس لاکتیس در مقابل آرتیمیا سالینا ناپولی تخمیر شدند.

**مواد و روش ها:** پس از استخراج شیر نارگیل تخمیر شده توسط لاکتوباسیلوس لاکتیس با متانول، سمیت سلولی نمونه ها (غلظت کشندگی) بررسی شد. آرتیمیا سالینا ناپولی نسل دهم در غلظت های مختلف (به دفعات) به عصاره های نمونه تخمیری انتقال داده شدند. پس از ۲۴ ساعت، زنده مانده آرتیمیا سالینا ناپولی شمارش و غلظت کشندگی بررسی شد. آزمون مرگ و میر میگوی آب شور برای بررسی سمیت نمونه ها در مقدارهای مختلف، از ۱ تا ۵۰۰  $\mu\text{g ml}^{-1}$  در فواصل زمانی گوناگون استفاده شد.

**یافته ها و نتیجه گیری:** عصاره های تخمیر شده پتانسیل کمی برای کشتن لارو، آرتیمیا سالینا ناپولی داشتند. بین مقدارهای عصاره و درصد مرگ و میر میگوی آب شور ناپولی همبستگی وجود داشت. عصاره های تخمیر شده پاستوریزه سمیت کمتر داشتند و ارزانتر بودند. جالب اینکه، کشت آغازگر، تخمیر، تیمار حرارتی و مدت زمان لازم برای تجزیه تانین های قایل آبکافت و ترکیبات پلی فنولی بزرگتر، تولید ترکیبات کوچکتر با سمیت کمتر در آزمون مرگ و میر میگوی آب شور موثر بودند. چهار عصاره زیست یار<sup>۲</sup> شیر سمیتی برای سلول نداشتند که با کشندگی اندک در آزمون مرگ و میر میگوی آب شور نشان داده شد. در نتیجه، این عصاره ها می توانند برای تنظیم تولید نوشیدنی های زیست یار مورد استفاده قرار گیرند.

**تعارض منافع:** نویسندگان اعلام می کنند که هیچ نوع تعارض منافی مرتبط با انتشار این مقاله ندارند.

### تاریخچه مقاله

دریافت ۹ مارس ۲۰۲۰

داوری ۱۲ آپریل ۲۰۲۰

پذیرش ۲۰ آپریل ۲۰۲۰

### واژگان کلیدی

آرتیمیا سالینا

آزمون مرگ و میر میگوی آب شور

شیر نارگیل

لاکتوباسیلوس لاکتیس زیرگونه

لاکتیس

### \*نویسنده مسئول

اولاد اولومی آجیبولا

دانشکده علوم و تکنولوژی منابع،

دانشگاه ساراواک مالزی، کوتا

ساماراهام، ۹۴۳۰۰

تلفن: +۶۰۱۶۶۵۱۳۴۵۰

دورنگار: +۶۰۸۲۵۸۳۱۶۰

پست الکترونیک:

olaideajibola@gmail.com

<sup>1</sup> microorganisms

<sup>2</sup> probiotics